

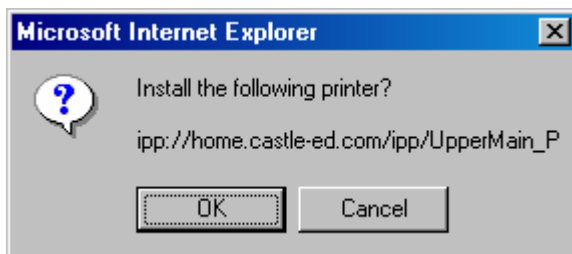
## Reinstalling (Secure) Printers

FIRST: Delete the 'old' network printers from Start > Settings > Printers & Faxes.

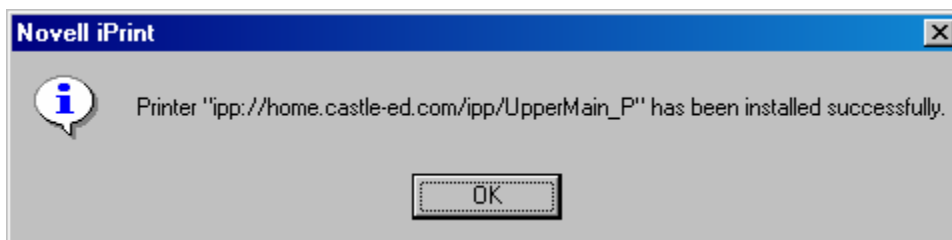
**Hint:** The ones that start with 'ipp' – we'll be installing 'new' https (secure) printers.

Goto: <https://home.castle-ed.com/ipps>

- Login with your username and password.
- Yes, install the iPrint Client if you haven't already
- For File Download, click Open not save (or Run From its current location...)
- Click Next
- Click Finish
- Close Internet Explorer
- Open Internet Explorer
- Goto: <https://home.castle-ed.com/ipps>
- Click the printer you want to install (ResourceCenter\_P)



- OK



- OK
- Install another printer or Close Internet Explorer